



( )

1.


ı ı ı ı ı ı ı ı ı Şi  
ı

2.



( )


( )

**1.**





**3.**

**2**

( )


( )

**3**

( )

1.

	146,940.22	29,147.19	54,958.21	37.40%
	82,127.16	11,615.09	38,000.98	46.27%
PACK	76,550.13	2,937.48	66,648.42	87.06%
	507.22	389.69	0.93	0.18%
	<b>306,124.73</b>	<b>44,089.45</b>	<b>159,608.53</b>	<b>52.14%</b>

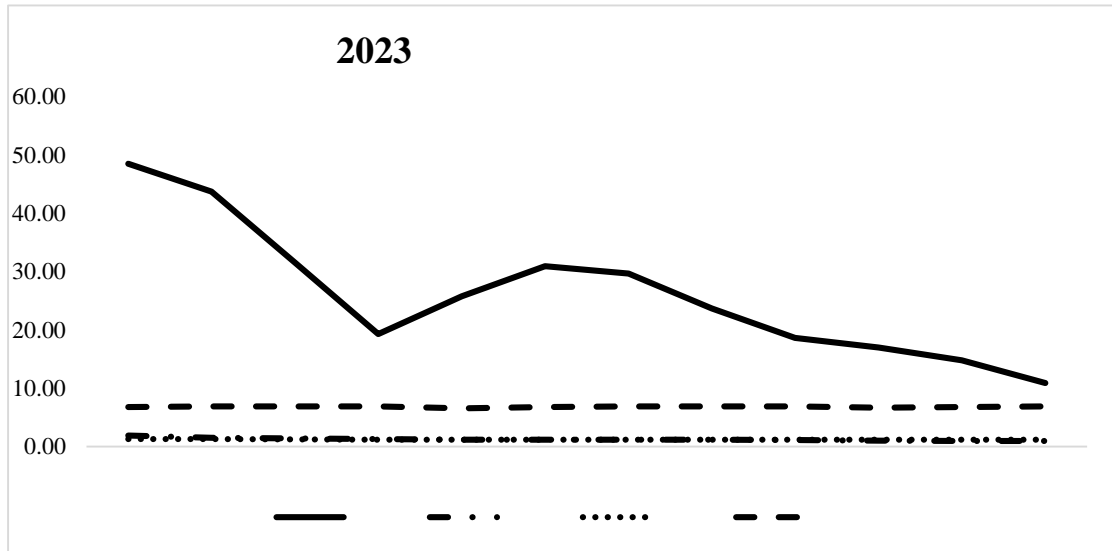
2.

	<b>1</b>	<b>1 -2</b>	<b>2 -3</b>	<b>3</b>	
	126,497.04	15,157.28	3,609.60	1,676.29	146,940.22
	67,278.24	10,728.93	2,633.96	1,486.02	82,127.16
PACK	72,505.51	1,838.09	652.41	1,554.13	76,550.13
	117.56	389.66			507.22
	<b>266,398.36</b>	<b>28,113.96</b>	<b>6,895.97</b>	<b>4,716.44</b>	<b>306,124.73</b>
	87.02%	9.18%	2.25%	1.54%	100.00%

3.

( )

1.



2.


( )

1.

2.




( )

1.

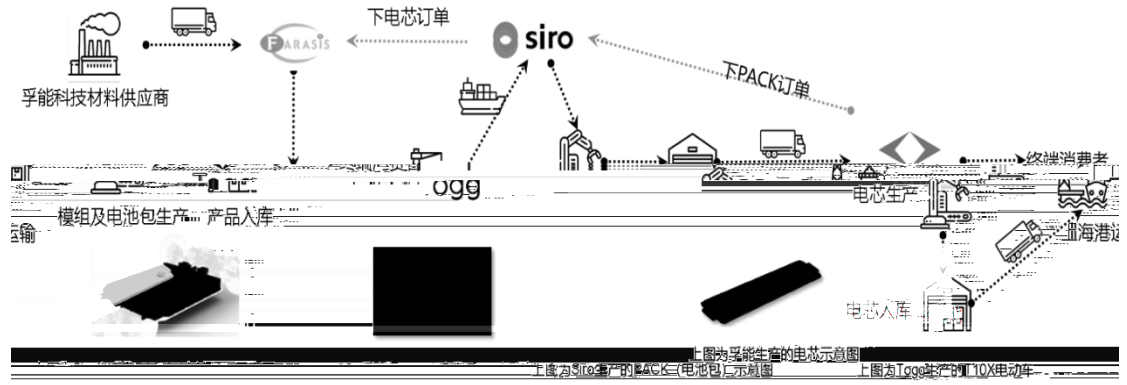







( )

**1.**



2.

3.

( )

**1.**




2.



--	--	--	--	--	--

3.






5.

	2023 4 3
	30,200
	7000
	4 302-33
	16.56%


( )

( )

				1	
		5	29,500	5.50%	
		5	100,000	4.65% 5 LPR+45BPs 4.65% 5 LPR+35BPs	
		3	49,600	4% 5 LPR- 30BPs	
		2	30,000	4.15% 5 LPR-5BPs	
		3	30,000	4.8248% 5 LPR+62.48BPs	